

**Preliminary Environmental Constraints**

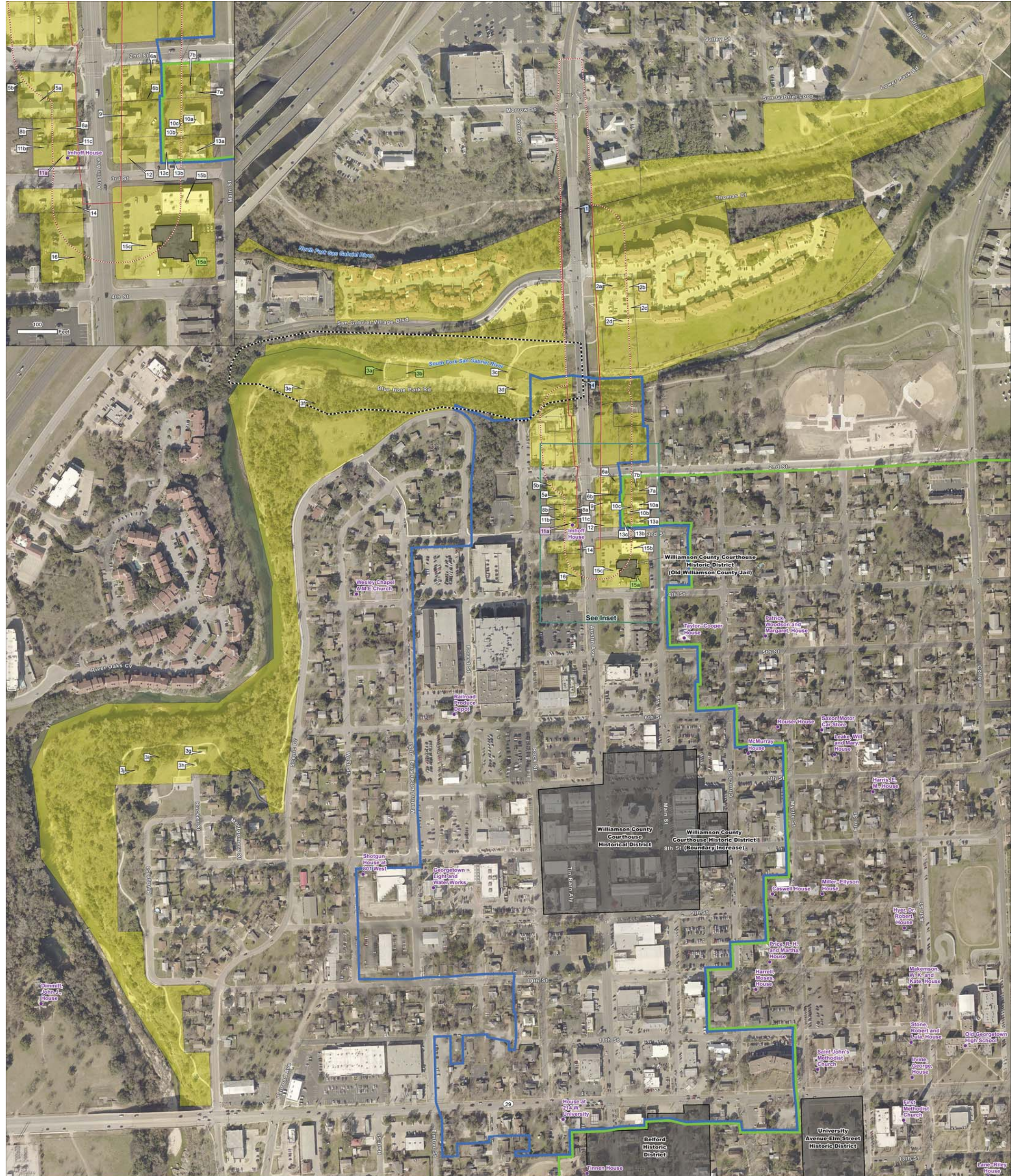
- Project Location
- NRHP-Eligible Property
- National Register District
- Park
- 100-Year Flood Zone
- Historical Marker
- Downtown Overlay District
- Edwards Aquifer Zone Boundary
- NHD Stream
- Old Town Overlay District
- Spring
- Georgetown Salamander Proposed Subsurface Critical Habitat
- NWI Wetland
- Recreational Trail
- Karst Zone 1 - Potential to Contain Endangered Cave Species
- Karst Zone 3 - Low Probability Endangered Cave Species
- Karst Zone 4 - No Endangered Cave Species

Data Sources: NHD (2014), NHD (2014), FEMA (2017), TDC (2018), WCO (2017), TDC (2018), FWS (2018), TDCOT (2018), Williamson County (2017), OMC (2017), Aerial Source: City of Georgetown (2017).



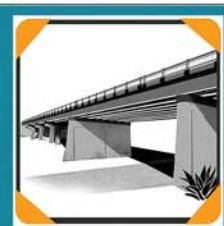
**AUSTIN AVENUE BRIDGES PROJECT  
GEORGETOWN, TEXAS**





**Historic Resources - DRAFT Eligibility Recommendations**

- Project Location
- Surveyed Resource - NRHP Listed (Resource 11a)
- Area of Potential Effects (APE)
- National Register District
- Old Town Overlay District (Local)
- National Register Property
- Surveyed Resource - Previously Determined NRHP Eligible (Resources 1 and 4)
- Parcels Intersecting APE
- Proposed NRHP District Boundary
- Downtown Overlay District (Local)
- Surveyed Resource
- Surveyed Resource - Recommended NRHP Eligible (Resources 3a, 3b, and 15a)



**AUSTIN AVENUE BRIDGES PROJECT**  
**GEORGETOWN, TEXAS**



Data Sources: The City of Georgetown (2014), CMHC (2017), Aerial Source: City of Georgetown (2017)